

PERFORMANCE ACRYLIC/FIBERGLASS STEPS

STEPS - LOUNGES - SPAS

Be smart, play it safe!

IMPORTANT: A number of very important items that are essential for the safe use of your pool may not be visible in many of the photographs, either because of perspective or camera angle, or because they were removed for photographic purposes. These items include:

1. Safety ropes, which should remain in place at all times
2. "No Diving" signs are provided by the manufacturer and should be installed in accordance with instructions included on the coping or liner, where they are clearly visible
3. An area sign is provided by the manufacturer and must be permanently and conspicuously affixed in the pool area where all users can see it
4. Necessary means of exit and entry into the pool
5. Fencing with a self-latching gate, and other barriers that can assist in preventing unsupervised access to the pool by children
6. Approved drain covers and other devices to protect against suction entrapment
7. Minimum required inlets and returns to ensure proper water circulation
8. Appropriate inpool lighting if the pool will be used after dark.

All of these devices should be installed in accordance with the manufacturer's instructions, ANSI/NSPI or ANSI/APSP standards, as well as state and local statutes and codes.

Diving boards and slides require minimum depths and distances and must only be installed and used in strict compliance with the equipment manufacturer's specifications and ANSI/NSPI or ANSI/APSP standards. If the pool is labeled by us as NON-DIVING, then diving equipment may not be installed and any such equipment must be removed before the pool is used.

Smart pool owners always think safety first. They take specific steps to ensure that their family, friends and guests are knowledgeable about the safe and sensible use of their pool. They also:

- ensure that their pool is never used unless there is adequate supervision
- ensure that their pool is kept in good repair and is not used when there is a missing or broken drain cover or other component
- ensure that ALL CHILDREN using their pool are supervised constantly
- that anyone under the influence of alcohol, drugs or stimulants that would impair their abilities or judgement does not use the pool
- ensure that their pool is protected by appropriate barriers to unsupervised entry including fencing with self-latching gates, covers, alarms, etc.

To assist you, a number of very important items of safety literature are included with each pool. We must insist that you read each item carefully and follow the instructions. These are:

- Pool Owners Safety Handbook
- "Notice" Card
- APSP "Sensible Way" Book
- Vinyl Swimming Pool Liner-Warranty
- "Children Aren't Waterproof" Book
- "No Diving" Labels
- Plaque

Make sure your builder supplies you with all of the safety information that accompanies your pool and installs the enclosed warning stickers and area sign where they can be clearly visible to all who use the pool.



PERFORMANCE STEPS are ICC-ES compliant when installed with the corresponding Latham International polymer (ESR #2450) and steel (ESR #2782) certified pool kit.

NOTICE: The manufacturer stands behind every product they produced pursuant to those representations which are stated in the written warranties. Your dealer/builder/contractor is an independent business person and not an agent or employee of the manufacturer. The manufacturer cannot and does not accept any responsibility for any representations, statements or contracts made by any dealer/builder/contractor.

Performance Steps™ is a Trademark of Latham Manufacturing, Corp.

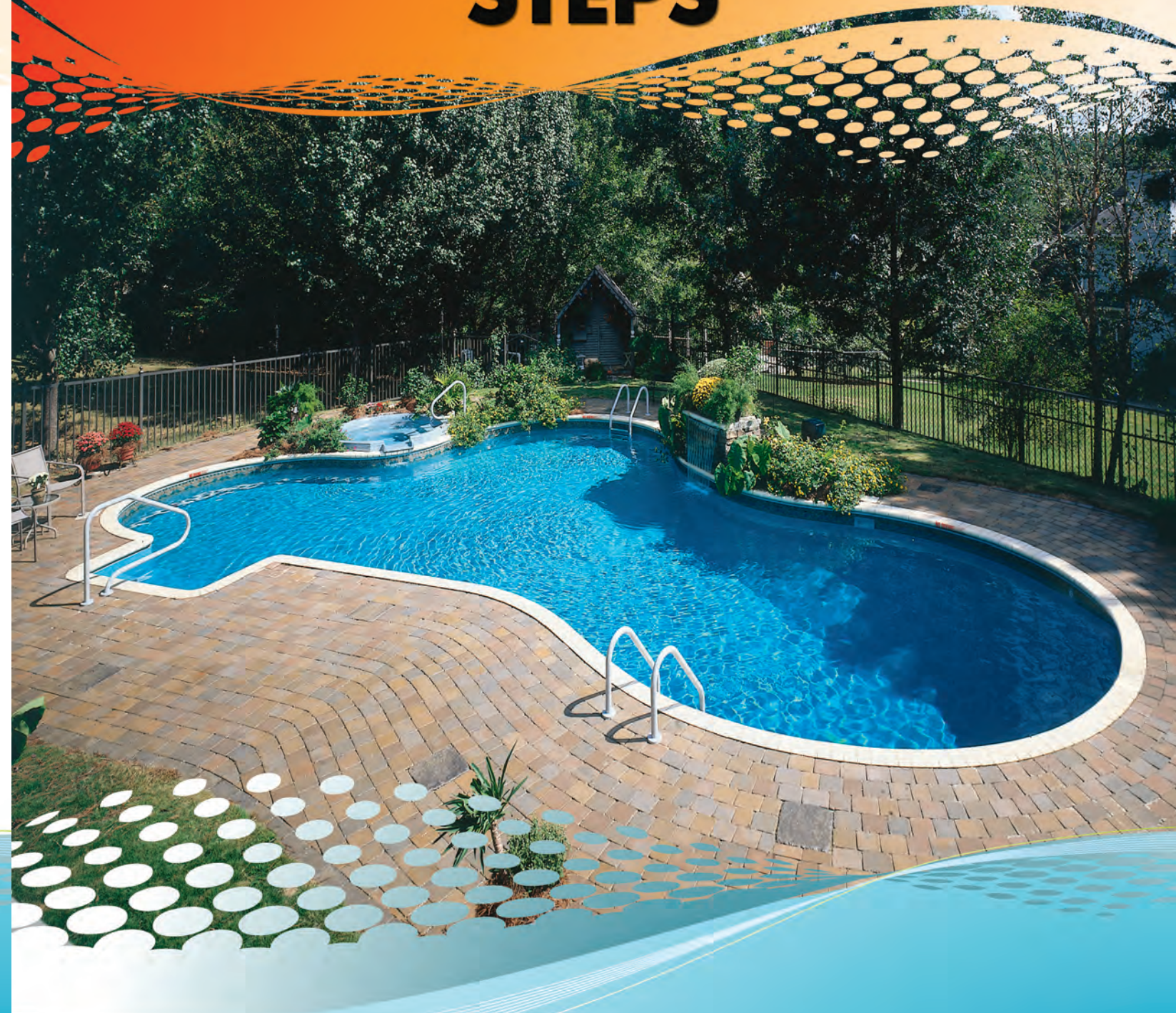
The specifications in this brochure were believed to be true at the time of printing. However, specifications, standard equipment and options are subject to change without notice.



Proud to be members of The Association of Pool & Spa Professionals.

The Association of Pool & Spa Professionals is a registered trademark of The Association of Pool & Spa Professionals. Used by permission.

PERFORMANCE ACRYLIC/FIBERGLASS STEPS



A RIGID TRADITION

PERFORMANCE
STEPS™

STEP COLLECTION

STEP COLLECTION

COLOR OPTIONS



Most colored steps are only available in Cantilever models. All models are not available in every color. Refer to chart on page 6 for options.



6' Straight Step
Available for 42" & 48" pool wall



8' Leisure Straight Step



8' French Curved Step



4' French Curved Step



4' Straight Step



6' French Curved Step
Available for 42" & 48" pool wall



8' Straight Roman Step



8' Straight Step
Available for 42" & 48" pool wall

NOW AVAILABLE!
SANDSTONE GRANITE COLOR



8' Curved Roman Step



11' Straight Roman Step

Step Cover



SPECIALTY STEP COLLECTION

SPA COLLECTION



4' Contour Step



6' Double Seat Cantilever
Plumbed & Jetted



8' Step and Bench Cantilever
Plumbed & Jetted



90 Degree Corner Step Cantilever

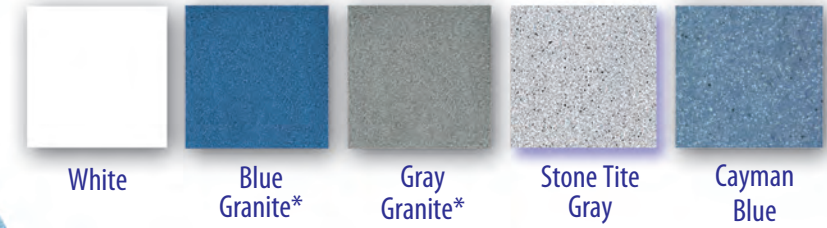


2' In-Wall Ladder



5' Lagoon Free Form Step
Plumbed & Jetted

COLOR OPTIONS



*Although similar, the blue and gray granite spas are not an identical color match to the blue and gray granite steps. Refer to Page 6 for model options.



92 Inch Scalloped Spill Over Spa
(Cayman Blue)
Plumbed, Foamed & Jetted



90 Inch Round Spill Over Spa
Plumbed, Foamed & Jetted



92 Inch Scalloped Stand Alone Spa
(Gray Granite)
Plumbed, Foamed & Jetted



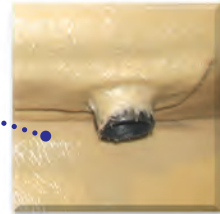
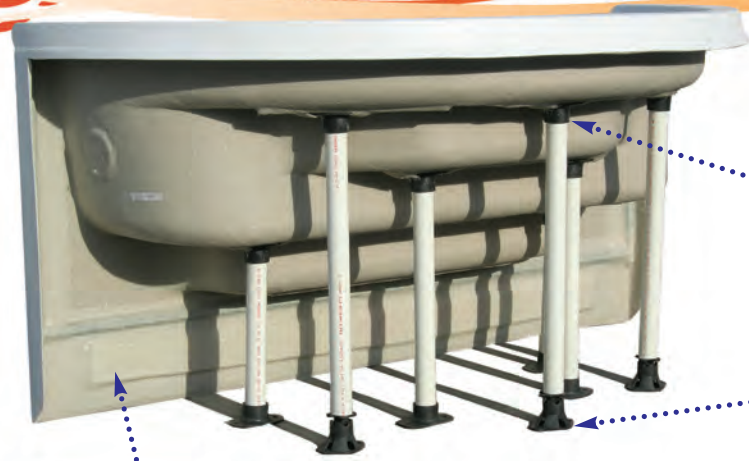
Winter Spa Cover



STEP FEATURES

SPECIFICATIONS

PERFORMANCE ACRYLIC/FIBERGLASS STEPS



Molded Pole Receivers
Unwavering stability and built-in accuracy for secure support; accepts 1.5" and 2" poles for professional versatility.



Patented Adjustable Foot
This new patented feature is designed to expedite leveling during installation.



PVC Faceplate with Durable Neoprene Gasket
The flexible and resilient neoprene gasket comes pre-affixed to the step providing a water-tight seal and bond with the liner and faceplate.



Rigidizing Panel
Rigid-Elastic Technology positioned at the base of the step for structural integrity and torsion resistance.



Rigid-Elastic Technology
Thermoplastic honeycombs (Rigid-Elastic Technology) with composite sandwich construction offer optimum elasticity. This equates to greater impact strength and load tolerance.



Rigidizing Tread Support
Rigid-Elastic Technology positioned underneath every tread for unsurpassed support, structural integrity and impact strength.



Optimum Support
Multiple levels of pole supports work in unison to create unrivaled balance and stability.



Weighted Measuring System
An Industrial weighing system that assures a calibrated, consistent distribution of fiberglass/resin material on each and every step.

Beauty Cap
The final touch for an attractive appearance.



Perfect Match
The 90° cut provides perfect alignment with a smooth finish to ensure the end result is a beautiful step.



Labeled Faceplates
Directional labels allow quick, convenient, accurate installation.

Model	Part Number	Treads	Height	Depth	Width	Jet Recesses	Cantilever	White	Gray Granite	Blue Granite	Sandstone Granite	Cayman Blue	Stone Tite Gray
4' Straight	STP4P	3	44"	37"	48"			X					
4' French Curved	STP49P	3	44"	46"	48"			X					
6' Straight	STP6P	4	45"	45"	72"	2		X	X	X			
6' Straight Cantilever	STP6CDP	4	43"	46"	72"	2	X	X	X	X			
6' French Curved	STP69P	4	45"	51"	72"	2		X	X	X			
6' Straight(48")	STP6X4P	4	51"	45"	72"	2		X					
6' French Curved(48")	STP69X4P	4	51"	51"	72"	2		X					
8' Straight	STP8P	4	46"	46"	96"	2		X					
8' Straight Cantilever	STP8CDP	4	43"	46"	96"	2	X	X	X	X			
8' Straight(48")	STP8X4P	4	51"	46"	96"	2		X					
8' Straight Roman	STPRM8P	4	45"	49"	96"	2		X	X	X			
8' Straight Roman Cantilever	STPRM8CDP	4	42"	49"	96"	2	X	X	X	X	X		
8' Curved Roman	STPRM89P	4	45"	60"	96"	2		X	X	X			
8' Curved Roman Cantilever	STPRM89CDP	4	42"	60"	96"	2	X	X	X	X	X	X	X
8' French Curved	STP89P	4	45"	58"	96"	2		X					
8' Straight Leisure	STP8LSP	4	46"	46"	96"	2		X					
8' Straight Leisure Cantilever	STP8LSCDP	4	43"	46"	96"	2	X	X			X	X	X
11' Roman	STPRM11P	4	44"	62"	132"	2		X					
11' Roman Cantilever	STPRM11CDP	4	44"	62"	132"	2	X	X	X	X		X	X
4' Contour Step	STP4CCDP	4	45"	56"	48"		X	X	X	X			
5' Lagoon Step	STP5LP	3	45"	71"	60"	5	X	X					
6' Double Seat Cantilever	STP6DSCDP	0	42"	32"	72"	2	X	X	X	X		X	X
Corner Step 90° Cantilever	STP90CSCDP	4	42"	72"	102"	2	X	X	X	X	X	X	X
2' Inwall Ladder	STP2L	3	42"	6"	24"			X	X	X		X	X
8' Step and Bench	STP8SBCDP	4	42"	54"	96"	2	X	X	X	X			
90" Round Spill Over Spa	PSSSOS1	2	34"	34"	90"	6		X	X	X			
92" Scalloped Spill Over Spa	SPASOS	2	39"	39"	92"	10		X	X	X		X	X
92" Scalloped Stand Alone Spa	SPA1	2	39"	39"	92"	10		X	X	X		X	X
Spa Winter Cover	PSSCFGSPACVR							X					
6' Winter Step Cover	CFGSTEPCVR6							X					
8' Winter Step Cover	CFGSTEPCVR8							X					

- ❖ Color models available in cantilever only - see chart for options. All other models available as special order item.
- ❖ For manufacturer warranty to be in effect, all treads must be supported as recommended by manufacturer.
- ❖ Printing color may vary from actual product. All colors/models subject to change without notice.